

Viking descents into Britain

Many members of the extended Douglas family have DNA that shows Viking origins.

The chart lists several Viking descents into Britain. On the chart are the sons of Rognvald the Mighty. Two of his sons have noteworthy descendants and the third one is hard to document.

Perhaps his most famous son was Rollo the Dane, 1st Duke of Normandy, direct grandfather of William the Conqueror. The second son was Einar who became Jarl (Earl) of Orkney. His son was Thorfinn who had the nom de guerre of "Skull Cleaver."

Traditionally the lines of Rollo and Einar converge as shown on the charts and they are both ancestors of Robert the Bruce.

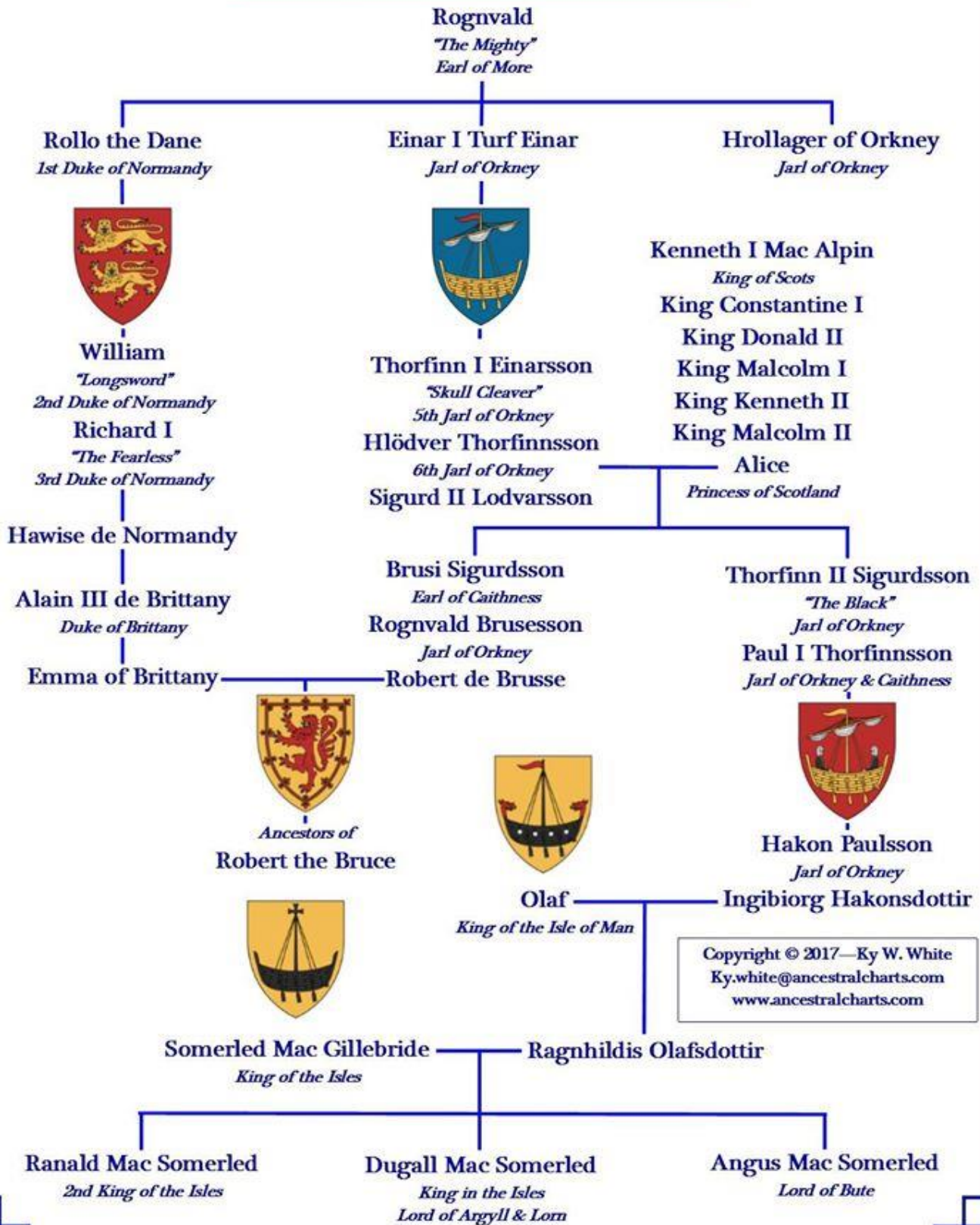
Skull Cleaver's son, Hlödver, married the Scottish Princess, Alice who was a descendant of Kenneth Mac Alpin. Their son Thorfinn II was an ancestor of Somerled, a Scot of Viking descent. Somerled was the first King of the Isles. Somerled's DNA is among the most common in all of Britain. His three sons are the clan fathers of many of the Highland Clans we know today.

Much of this is taken from the Orkneyinga Saga which was written 300 years after the fact. It doesn't meet modern standards of vital statistics, but it all that we have.

Obviously, much of this predates heraldry. I've used historical arms where possible and have used attributed arms where the historical arms are nonexistent.

Kindly supplied by www.ancestralcharts.com

Viking Descents into Britain



Copyright © 2017—Ky W. White
 Ky.white@ancestralcharts.com
 www.ancestralcharts.com